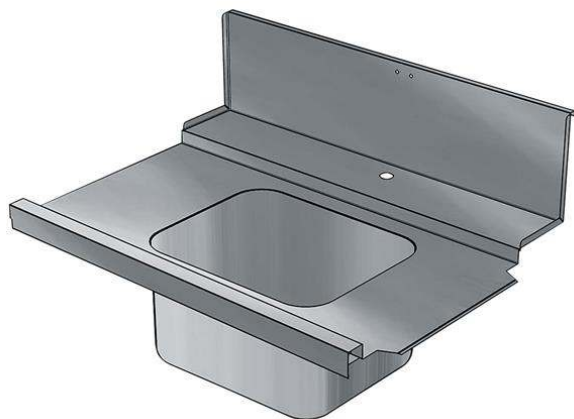




## Handling System for Hood type Pre-wash Infill Top with Bowl Right to Left, 1000mm

ITEM # \_\_\_\_\_  
MODEL # \_\_\_\_\_  
NAME # \_\_\_\_\_  
SIS # \_\_\_\_\_  
AIA # \_\_\_\_\_



865317 (BHHP1B10R)

Prewash infill Top with bowl,  
r>l, 1000mm

### Short Form Specification

#### Item No. \_\_\_\_\_

For hood type dishwashers. Constructed in 304 AISI stainless steel with backsplash mm250h. Bowl size mm500x400x300h with overflow pipe and drain hole. Basket direction: from right to left.

### Main Features

- To be secured to the dishwasher and fitted to the receiving and sorting tables at the other end.
- Designed for 500x500 mm dishwashing racks.

### Construction

- Deep anti-drip profiles completely folded with lower edge for safe and easy cleaning.
- All surfaces smooth with polished finish.
- 304 AISI stainless steel construction throughout.
- Included splashback to prevent water spatter.
- Bowl size 500x400x300h with drain hole and strainer.

### Optional Accessories

- Single plastic drain syphon 2 PNC 895313 ☐  
" for Sinks

APPROVAL: \_\_\_\_\_



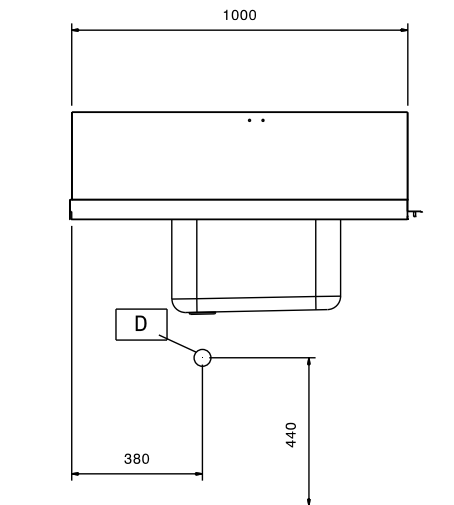
Experience the Excellence  
[www.electroluxprofessional.com](http://www.electroluxprofessional.com)



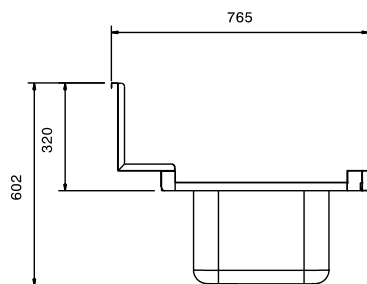
**Electrolux**  
PROFESSIONAL

## Handling System for Hood type Pre-wash Infill Top with Bowl Right to Left, 1000mm

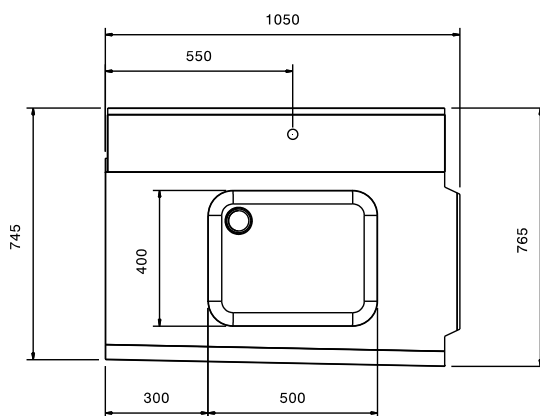
Front



Side



Top



### Key Information:

External dimensions, Width:

**865317 (BHHP1B10R)** 1050 mm

External dimensions, Depth: 765 mm

External dimensions, Height: 600 mm

Net weight: 8 kg

Basin dimensions: 500x400x300h

Feeding direction: from Right to Left

Handling System for Hood type  
Pre-wash Infill Top with Bowl Right to Left, 1000mm

The company reserves the right to make modifications to the products without prior notice. All information correct at time of printing.

2025.05.22